

09H0200004

Passport data

Accession number

09H0200004

Accession name (group, landrace, variety)

Milka original

Year of introduction

1966

Taxon

Allium cepa L. *Aggregatum* Group

Collecting site

*Czechoslovakia

Field pictures



© Stavěliková June 2008-2010



© Stavěliková June 2011

Bulbs



© Stavěliková 2008-2010

Characterisation data

Descriptor (Descriptor Code)	Value (Scoring Value)
Foliage colour (7.1.1)	green (3)
Leaf diameter (7.1.3)	medium (5)
Foliage attitude (7.1.5)	erect (7)
Degree of leaf waxiness (7.1.8)	medium (5)
Shape of mature dry bulbs (7.1.11)	globe (5)
Population uniformity of bulb shape (7.1.14)	variable (2)
Bulb skin colour (7.1.15)	yellow and light brown (3)
Bulb flesh colour (7.1.18)	white (1)
Average number of bulbs per cluster (7.1.25)	few (3)
Ability to flower (7.2.1)	yes (1)
Flower number in umbel (7.2.6)	many, more than 30 (2)

Further remarks: in AFLP analysis included

09H0200006

Passport data

Accession number	09H0200006
Accession name (group, landrace, variety)	Gelbe Schalotte
Year of introduction	1961
Taxon	<i>Allium cepa</i> L. <i>Aggregatum</i> Group
Donor	Haubensack
Donor place	Vienna, Austria

Field pictures



© Stavěliková June 2008-2010



© Stavěliková June 2011

Bulbs



© Stavěliková 2008-2010

Characterisation data

Descriptor (Descriptor Code)	Value (Scoring Value)
Foliage colour (7.1.1)	green (3)
Leaf diameter (7.1.3)	medium (5)
Foliage attitude (7.1.5)	erect (7)
Degree of leaf waxiness (7.1.8)	medium (5)
Shape of mature dry bulbs (7.1.11)	rhomboid (3)
Population uniformity of bulb shape (7.1.14)	uniform (1)
Bulb skin colour (7.1.15)	light brown (4)
Bulb flesh colour (7.1.18)	white (1)
Average number of bulbs per cluster (7.1.25)	medium (5)
Ability to flower (7.2.1)	yes (1)
Flower number in umbel (7.2.6)	many, more than 30 (2)

Further remarks: in AFLP analysis included

09H0200008

Passport data

Accession number	09H0200008
Accession name (group, landrace, variety)	Zluta
Year of introduction	1952
Taxon	<i>Allium cepa</i> L. <i>Aggregatum</i> Group
Collecting site	*Czechoslovakia

Field pictures

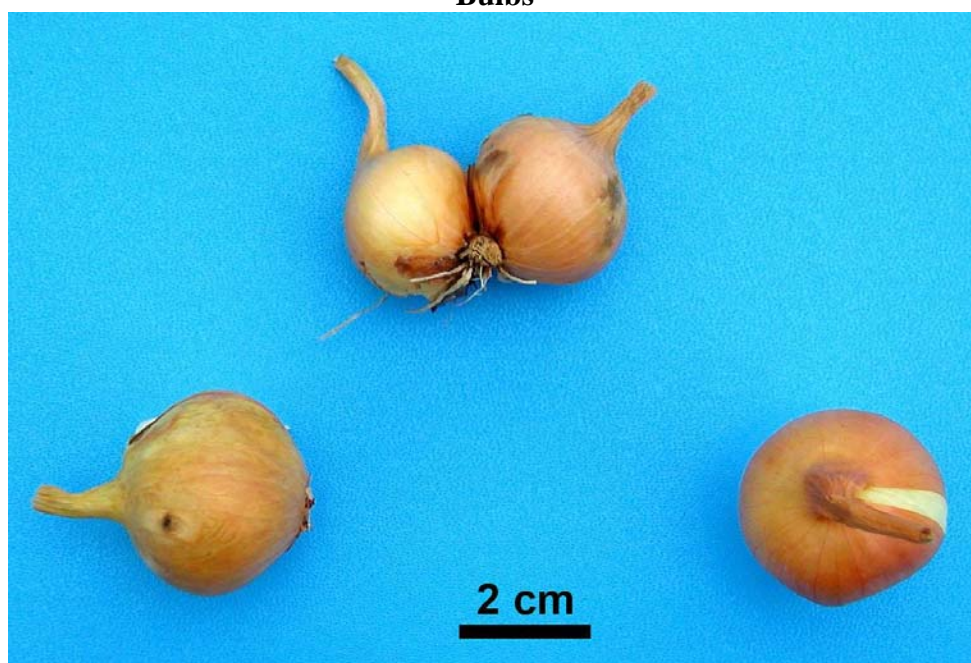


© Stavěliková June 2008-2010



© Stavěliková June 2011

Bulbs



© Stavěliková 2008-2010

Characterisation data

Descriptor (Descriptor Code)	Value (Scoring Value)
Foliage colour (7.1.1)	green (3)
Leaf diameter (7.1.3)	narrow (3)
Foliage attitude (7.1.5)	erect (7)
Degree of leaf waxiness (7.1.8)	medium (5)
Shape of mature dry bulbs (7.1.11)	globe (5)
Population uniformity of bulb shape (7.1.14)	uniform (1)
Bulb skin colour (7.1.15)	light brown (4)
Bulb flesh colour (7.1.18)	white (1)
Average number of bulbs per cluster (7.1.25)	few (3)
Ability to flower (7.2.1)	yes (1)
Flower number in umbel (7.2.6)	many, more than 30 (2)

Further remarks: in AFLP analysis included

09H0200010

Passport data

Accession number	09H0200010
Accession name (group, landrace, variety)	Dunn's Giant
Year of introduction	1958
Taxon	<i>Allium cepa</i> L. <i>Aggregatum</i> Group
Donor	Dunn
Donor place	Salisbury, United Kingdom

Field pictures

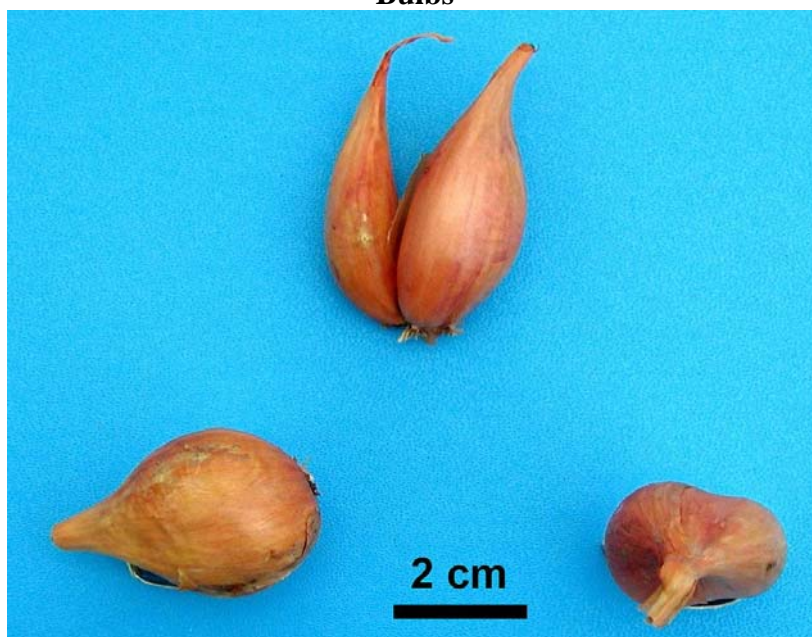


© Stavěliková June 2008-2010



© Stavěliková June 2011

Bulbs



© Stavěliková 2008-2010

Characterisation data

Descriptor (Descriptor Code)	Value (Scoring Value)
Foliage colour (7.1.1)	green (3)
Leaf diameter (7.1.3)	medium (5)
Foliage attitude (7.1.5)	erect (7)
Degree of leaf waxiness (7.1.8)	medium (5)
Shape of mature dry bulbs (7.1.11)	globe (5)
Population uniformity of bulb shape (7.1.14)	uniform (1)
Bulb skin colour (7.1.15)	light brown (4)
Bulb flesh colour (7.1.18)	white (1)
Average number of bulbs per cluster (7.1.25)	few (3)
Ability to flower (7.2.1)	yes (1)
Flower number in umbel (7.2.6)	many, more than 30 (2)

Further remarks: in AFLP analysis included

09H0200013

Passport data

Accession number	09H0200013
Accession name (group, landrace, variety)	Sibirskij Skorospelyj
Year of introduction	1981
Taxon	<i>Allium cepa</i> L. <i>Aggregatum</i> Group
Donor	NIIOCH
Donor place	Moscow, *Soviet Union

Field pictures



© Stavěliková June 2008-2010



© Stavěliková June 2011

Bulbs



© Stavěliková 2008-2010

Characterisation data

Descriptor (Descriptor Code)	Value (Scoring Value)
Foliage colour (7.1.1)	dark green (5)
Leaf diameter (7.1.3)	medium (5)
Foliage attitude (7.1.5)	intermediate (5)
Degree of leaf waxiness (7.1.8)	medium (5)
Shape of mature dry bulbs (7.1.11)	globe (5)
Population uniformity of bulb shape (7.1.14)	uniform (1)
Bulb skin colour (7.1.15)	yellow and light brown (3)
Bulb flesh colour (7.1.18)	white (1)
Average number of bulbs per cluster (7.1.25)	medium (5)
Ability to flower (7.2.1)	yes (1)
Flower number in umbel (7.2.6)	many, more than 30 (2)

Further remarks: in AFLP analysis included

09H0200015

Passport data

Accession number

09H0200015

Accession name (group, landrace, variety)

landrace (Trebonska)

Year of introduction

1981

Taxon

Allium cepa L. *Aggregatum* Group

Collecting site

Trebon district, Lomnice nad Luznici, Czech Republic

Field pictures



© Stavěliková June 2008-2010



© Stavěliková June 2011

Bulbs



© Stavěliková 2008-2010

Characterisation data

Descriptor (Descriptor Code)	Value (Scoring Value)
Foliage colour (7.1.1)	green (3)
Leaf diameter (7.1.3)	medium (5)
Foliage attitude (7.1.5)	intermediate (5)
Degree of leaf waxiness (7.1.8)	medium (5)
Shape of mature dry bulbs (7.1.11)	broad elliptic (6)
Population uniformity of bulb shape (7.1.14)	uniform (1)
Bulb skin colour (7.1.15)	light violet (8)
Bulb flesh colour (7.1.18)	white (1)
Average number of bulbs per cluster (7.1.25)	medium (5)
Ability to flower (7.2.1)	yes (1)
Flower number in umbel (7.2.6)	many, more than 30 (2)

Further remarks: in AFLP analysis included

09H0200018

Passport data

Accession number	09H0200018
Accession name (group, landrace, variety)	landrace (ROM 1)
Year of introduction	1984
Taxon	<i>Allium cepa</i> L. <i>Aggregatum</i> Group
Collecting site	Romania

Field pictures

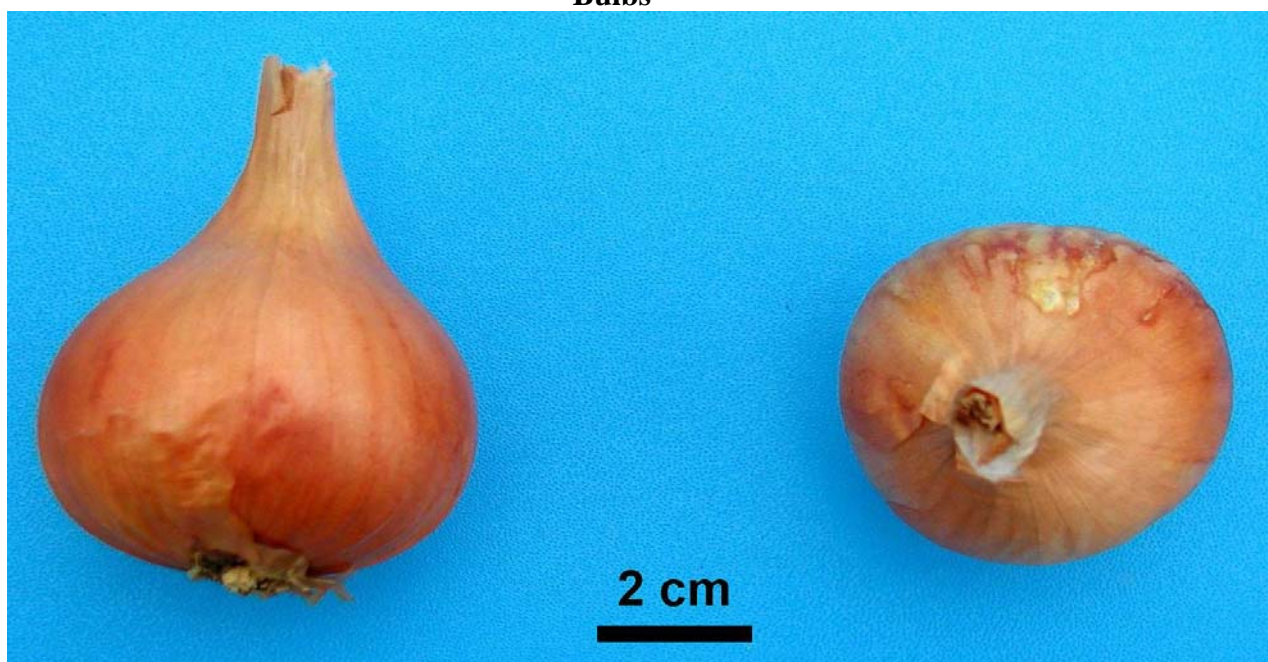


© Stavěliková June 2008-2010



© Stavěliková June 2011

Bulbs



© Stavěliková 2008-2010

Characterisation data

Descriptor (Descriptor Code)	Value (Scoring Value)
Foliage colour (7.1.1)	green (3)
Leaf diameter (7.1.3)	medium (5)
Foliage attitude (7.1.5)	erect (7)
Degree of leaf waxiness (7.1.8)	medium (5)
Shape of mature dry bulbs (7.1.11)	globe (5)
Population uniformity of bulb shape (7.1.14)	uniform (1)
Bulb skin colour (7.1.15)	brown (5)
Bulb flesh colour (7.1.18)	white (1)
Average number of bulbs per cluster (7.1.25)	few (3)
Ability to flower (7.2.1)	yes (1)
Flower number in umbel (7.2.6)	many, more than 30 (2)

Further remarks: in AFLP analysis included

09H0200276

Passport data

Accession number	09H0200276
Accession name (group, landrace, variety)	landrace (Minnesund)
Year of introduction	1986
Taxon	<i>Allium cepa</i> L. <i>Aggregatum</i> Group
Collecting site	Hedmark, Smalok, Minnesund, Eidsvoll, Norway

Field pictures



© Stavěliková June 2008-2010



© Stavěliková June 2011

Bulbs



© Stavěliková 2008-2010

Characterisation data

Descriptor (Descriptor Code)	Value (Scoring Value)
Foliage colour (7.1.1)	green (3)
Leaf diameter (7.1.3)	medium (5)
Foliage attitude (7.1.5)	erect (7)
Degree of leaf waxiness (7.1.8)	medium (5)
Shape of mature dry bulbs (7.1.11)	rhomboid (3)
Population uniformity of bulb shape (7.1.14)	uniform (1)
Bulb skin colour (7.1.15)	yellow and light brown (3)
Bulb flesh colour (7.1.18)	white (1)
Average number of bulbs per cluster (7.1.25)	medium (5)
Ability to flower (7.2.1)	yes (1)
Flower number in umbel (7.2.6)	many, more than 30 (2)

Further remarks: in AFLP analysis included

09H0200282

Passport data

Accession number	09H0200282
Accession name (group, landrace, variety)	landrace (Flesberg)
Year of introduction	1986
Taxon	<i>Allium cepa</i> L. <i>Aggregatum</i> Group
Collecting site	Buskerud, Flesberg, Norway

Field pictures



© Stavěliková June 2008-2010



© Stavěliková June 2011

Bulbs



© Stavěliková 2008-2010

Characterisation data

Descriptor (Descriptor Code)	Value (Scoring Value)
Foliage colour (7.1.1)	green (3)
Leaf diameter (7.1.3)	narrow (3)
Foliage attitude (7.1.5)	intermediate (5)
Degree of leaf waxiness (7.1.8)	medium (5)
Shape of mature dry bulbs (7.1.11)	broad elliptic (6)
Population uniformity of bulb shape (7.1.14)	uniform (1)
Bulb skin colour (7.1.15)	light violet (8)
Bulb flesh colour (7.1.18)	white (1)
Average number of bulbs per cluster (7.1.25)	medium (5)
Ability to flower (7.2.1)	yes (1)
Flower number in umbel (7.2.6)	many, more than 30 (2)

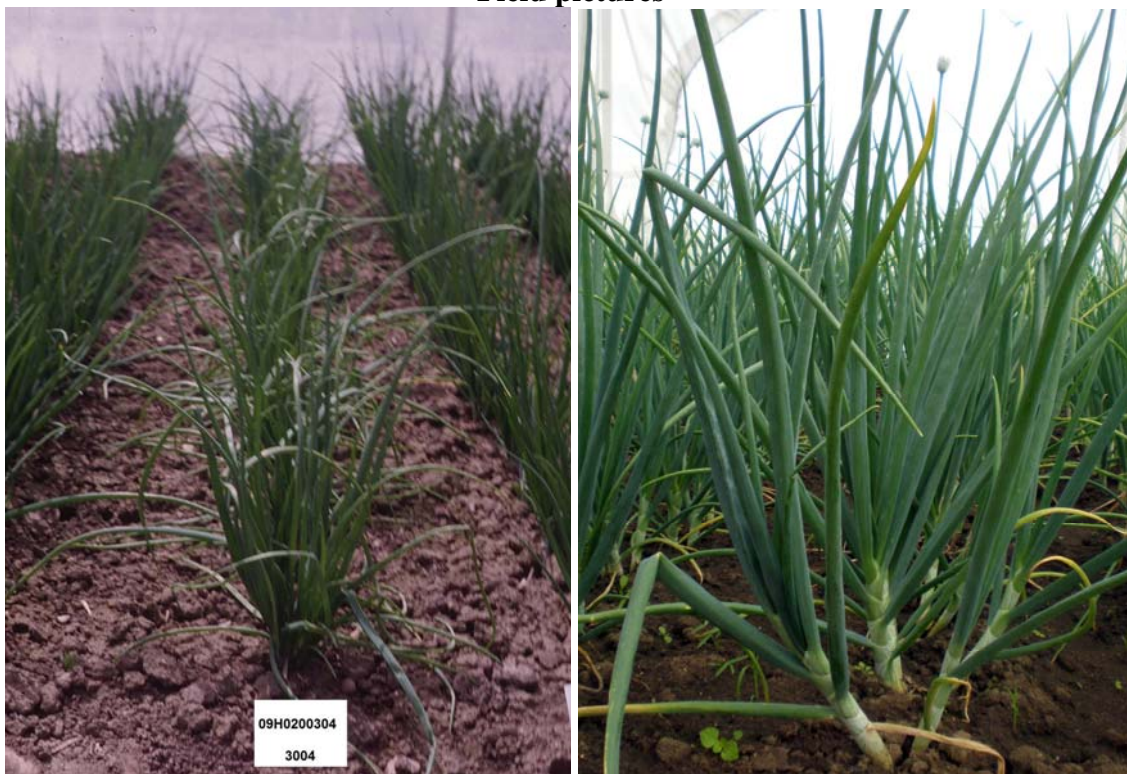
Further remarks: in AFLP analysis included

09H0200304

Passport data

Accession number	09H0200304
Accession name (group, landrace, variety)	landrace (Chodska 1)
Year of introduction	1986
Taxon	<i>Allium cepa</i> L. <i>Aggregatum</i> Group
Collecting site	Domazlice, Czech republic

Field pictures



© Stavěliková June 2008-2010

© Stavěliková June 2011

Bulbs



© Stavěliková 2008-2010

Characterisation data

Descriptor (Descriptor Code)	Value (Scoring Value)
Foliage colour (7.1.1)	green (3)
Leaf diameter (7.1.3)	broad (7)
Foliage attitude (7.1.5)	intermediate (5)
Degree of leaf waxiness (7.1.8)	medium (5)
Shape of mature dry bulbs (7.1.11)	globe (5)
Population uniformity of bulb shape (7.1.14)	uniform (1)
Bulb skin colour (7.1.15)	brown (5)
Bulb flesh colour (7.1.18)	white (1)
Average number of bulbs per cluster (7.1.25)	medium (5)
Ability to flower (7.2.1)	yes (1)
Flower number in umbel (7.2.6)	many, more than 30 (2)

Further remarks: in AFLP analysis included

09H0200306

Passport data

Accession number	09H0200306
Accession name (group, landrace, variety)	landrace (Vestnes 2)
Year of introduction	1986
Taxon	<i>Allium cepa</i> L. <i>Aggregatum</i> Group
Collecting site	Ronsdal, Vestnes, Norway

Field pictures



© Stavěliková June 2008-2010



© Stavěliková June 2011

Bulbs



© Stavěliková 2008-2010

Characterisation data

Descriptor (Descriptor Code)	Value (Scoring Value)
Foliage colour (7.1.1)	dark green (5)
Leaf diameter (7.1.3)	narrow (3)
Foliage attitude (7.1.5)	intermediate (5)
Degree of leaf waxiness (7.1.8)	weak (3)
Shape of mature dry bulbs (7.1.11)	broad oval (4)
Population uniformity of bulb shape (7.1.14)	uniform (1)
Bulb skin colour (7.1.15)	green (7)
Bulb flesh colour (7.1.18)	white (1)
Average number of bulbs per cluster (7.1.25)	medium (5)
Ability to flower (7.2.1)	no (0)
Flower number in umbel (7.2.6)	absent (0)

Further remarks: in AFLP analysis included

09H0200576

Passport data

Accession number	09H0200576
Accession name (group, landrace, variety)	landrace (Oravska Polhora)
Year of introduction	1988
Taxon	<i>Allium cepa</i> L. <i>Aggregatum</i> Group
Collecting site	Orava, Oravska Polhora, Slovakia

Field pictures



© Stavěliková June 2008-2010

Bulbs



© Stavěliková 2008-2010

Characterisation data

Descriptor (Descriptor Code)	Value (Scoring Value)
Foliage colour (7.1.1)	green (3)
Leaf diameter (7.1.3)	medium (5)
Foliage attitude (7.1.5)	intermediate (5)
Degree of leaf waxiness (7.1.8)	medium (5)
Shape of mature dry bulbs (7.1.11)	ovate (7)
Population uniformity of bulb shape (7.1.14)	uniform (1)
Bulb skin colour (7.1.15)	dark violet (9)
Bulb flesh colour (7.1.18)	white (1)
Average number of bulbs per cluster (7.1.25)	many (7)
Ability to flower (7.2.1)	yes (1)
Flower number in umbel (7.2.6)	many, more than 30 (2)

Further remarks: in AFLP analysis included

09H0200578

Passport data

Accession number	09H0200578
Accession name (group, landrace, variety)	landrace (Zazriva 2)
Year of introduction	1988
Taxon	<i>Allium cepa</i> L. <i>Aggregatum</i> Group
Collecting site	Orava, Zazriva, Slovakia

Field pictures



© Stavěliková June 2008-2010



© Stavěliková June 2011

Bulbs



© Stavěliková 2008-2010

Characterisation data

Descriptor (Descriptor Code)	Value (Scoring Value)
Foliage colour (7.1.1)	green (3)
Leaf diameter (7.1.3)	broad (7)
Foliage attitude (7.1.5)	erect (7)
Degree of leaf waxiness (7.1.8)	medium (5)
Shape of mature dry bulbs (7.1.11)	flat globe (2)
Population uniformity of bulb shape (7.1.14)	uniform (1)
Bulb skin colour (7.1.15)	brown (5)
Bulb flesh colour (7.1.18)	white (1)
Average number of bulbs per cluster (7.1.25)	medium (5)
Ability to flower (7.2.1)	yes (1)
Flower number in umbel (7.2.6)	many, more than 30 (2)

Further remarks: in AFLP analysis included

09H0200634

Passport data

Accession number	09H0200634
Accession name (group, landrace, variety)	landrace (V850783)
Year of introduction	1988
Taxon	<i>Allium cepa</i> L. <i>Aggregatum</i> Group
Collecting site	Finland

Field pictures



© Stavěliková June 2008-2010



© Stavěliková June 2011

Bulbs



© Stavěliková 2008-2010

Characterisation data

Descriptor (Descriptor Code)	Value (Scoring Value)
Foliage colour (7.1.1)	dark green (5)
Leaf diameter (7.1.3)	broad (7)
Foliage attitude (7.1.5)	erect (7)
Degree of leaf waxiness (7.1.8)	medium (5)
Shape of mature dry bulbs (7.1.11)	rhomboid (3)
Population uniformity of bulb shape (7.1.14)	variable (2)
Bulb skin colour (7.1.15)	light brown (4)
Bulb flesh colour (7.1.18)	white (1)
Average number of bulbs per cluster (7.1.25)	few (3)
Ability to flower (7.2.1)	yes (1)
Flower number in umbel (7.2.6)	many, more than 30 (2)

Further remarks: in AFLP analysis included

09H0200958

Passport data

Accession number	09H0200958
Accession name (group, landrace, variety)	Landrace (Chodska)
Year of introduction	1990
Taxon	<i>Allium cepa</i> L. <i>Aggregatum</i> Group
Collecting site	Domazlice, Czech Republic

Field pictures



© Stavěliková June 2008-2010



© Stavěliková June 2011

Bulbs



© Stavěliková 2008-2010

Characterisation data

Descriptor (Descriptor Code)	Value (Scoring Value)
Foliage colour (7.1.1)	green (3)
Leaf diameter (7.1.3)	medium (5)
Foliage attitude (7.1.5)	erect (7)
Degree of leaf waxiness (7.1.8)	strong (7)
Shape of mature dry bulbs (7.1.11)	broad elliptic (6)
Population uniformity of bulb shape (7.1.14)	uniform (1)
Bulb skin colour (7.1.15)	green (7)
Bulb flesh colour (7.1.18)	white (1)
Average number of bulbs per cluster (7.1.25)	many (7)
Ability to flower (7.2.1)	yes (1)
Flower number in umbel (7.2.6)	many, more than 30 (2)

Further remarks: in AFLP analysis included

09H0200961

Passport data

Accession number	09H0200961
Accession name (group, landrace, variety)	Sibirskij Zoltyj
Year of introduction	1990
Taxon	<i>Allium cepa</i> L. <i>Aggregatum</i> Group
Collecting site	*Soviet Union

Field pictures



© Stavěliková June 2008-2010



© Stavěliková June 2011

Bulbs



© Stavěliková 2008-2010

Characterisation data

Descriptor (Descriptor Code)	Value (Scoring Value)
Foliage colour (7.1.1)	green (3)
Leaf diameter (7.1.3)	medium (5)
Foliage attitude (7.1.5)	erect (7)
Degree of leaf waxiness (7.1.8)	medium (5)
Shape of mature dry bulbs (7.1.11)	globe (5)
Population uniformity of bulb shape (7.1.14)	uniform (1)
Bulb skin colour (7.1.15)	yellow and light brown (3)
Bulb flesh colour (7.1.18)	white (1)
Average number of bulbs per cluster (7.1.25)	medium (5)
Ability to flower (7.2.1)	yes (1)
Flower number in umbel (7.2.6)	many, more than 30 (2)

Further remarks: in AFLP analysis included